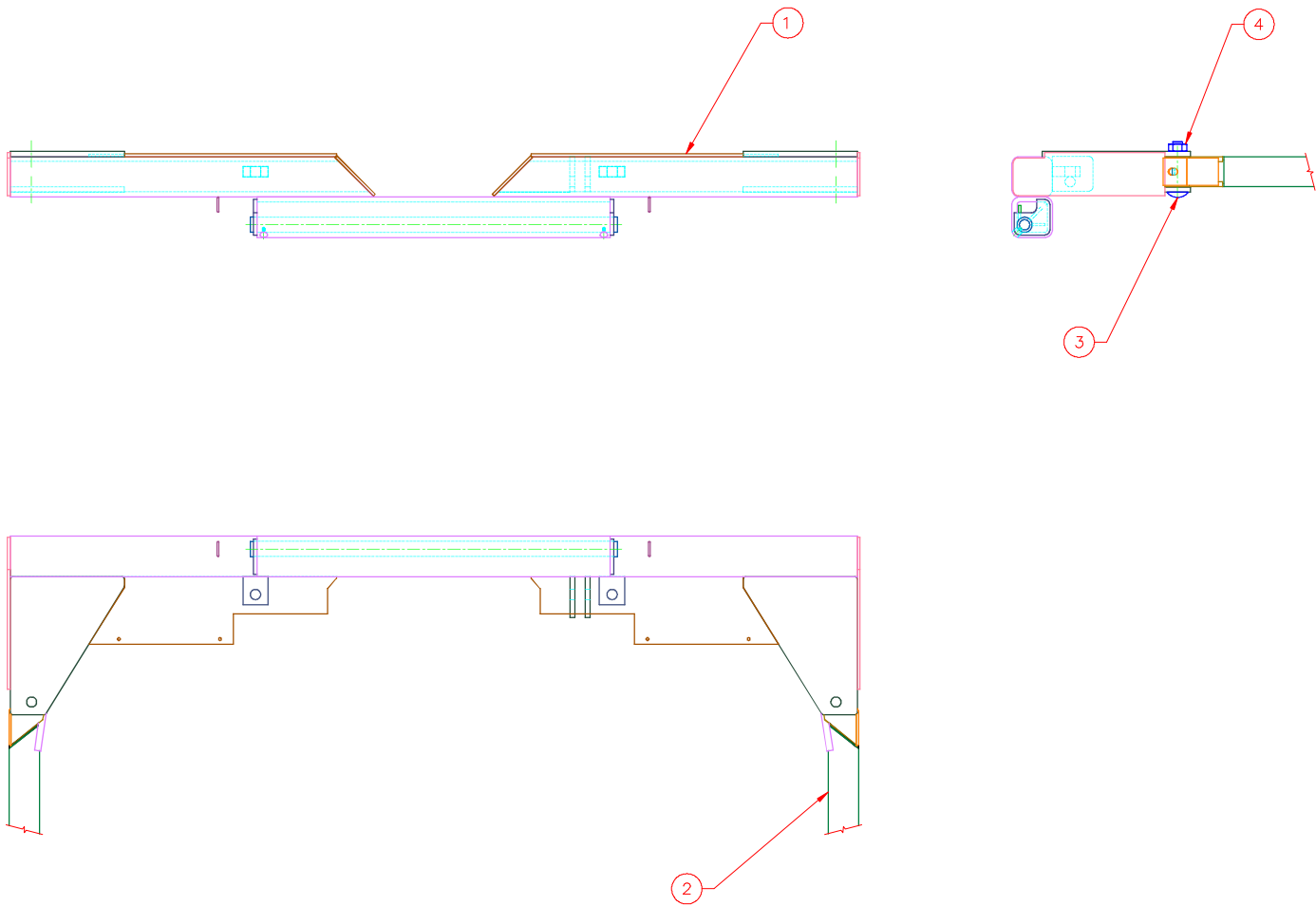


This drawing contains confidential proprietary information of Triple C, Inc. and is subject to return upon request. The furnishing of this drawing is not to be construed as the grant of any license, express or implied, to manufacture, have manufactured, use or sell the structures shown hereon.



ITEM	MATERIAL \ DESCRIPTION	LENGTH	QTY	DRAWING NO.
1	BD22-9		1	20-1126
2	AS-AR3348		2	10-1505
3	BO 1-14x5 CCS		2	
4	BO 1-14 HNS		2	

TRIPLE C INC.	
P.O. BOX 248, SABETHA, KS 66534 (785) 284-3674 FAX (785) 284-3931	
DRAWN BY: CHRIS ABERLE 10/9/06	
TITLE: REAR ASSEMBLY, BD2200	
ASSEMBLY NUMBER: BD22-430	
DRAWING NUMBER: 20-1127	
REV	